

# Give every child a good start in life

Yvonne Kelly

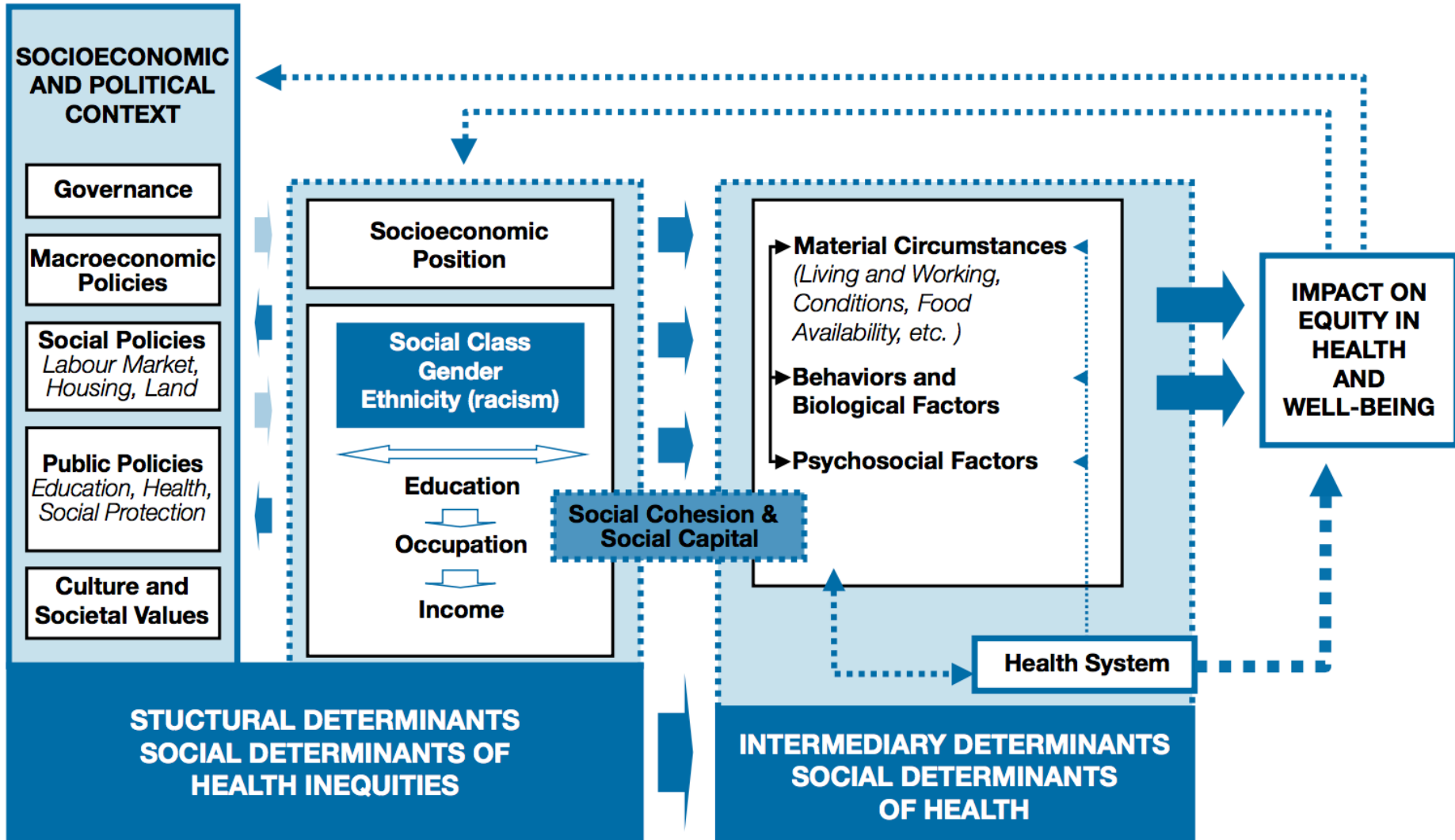
International Centre for Lifecourse Studies in Society and Health (ICLS)

[www.ucl.ac.uk/icls](http://www.ucl.ac.uk/icls)

@icls\_info

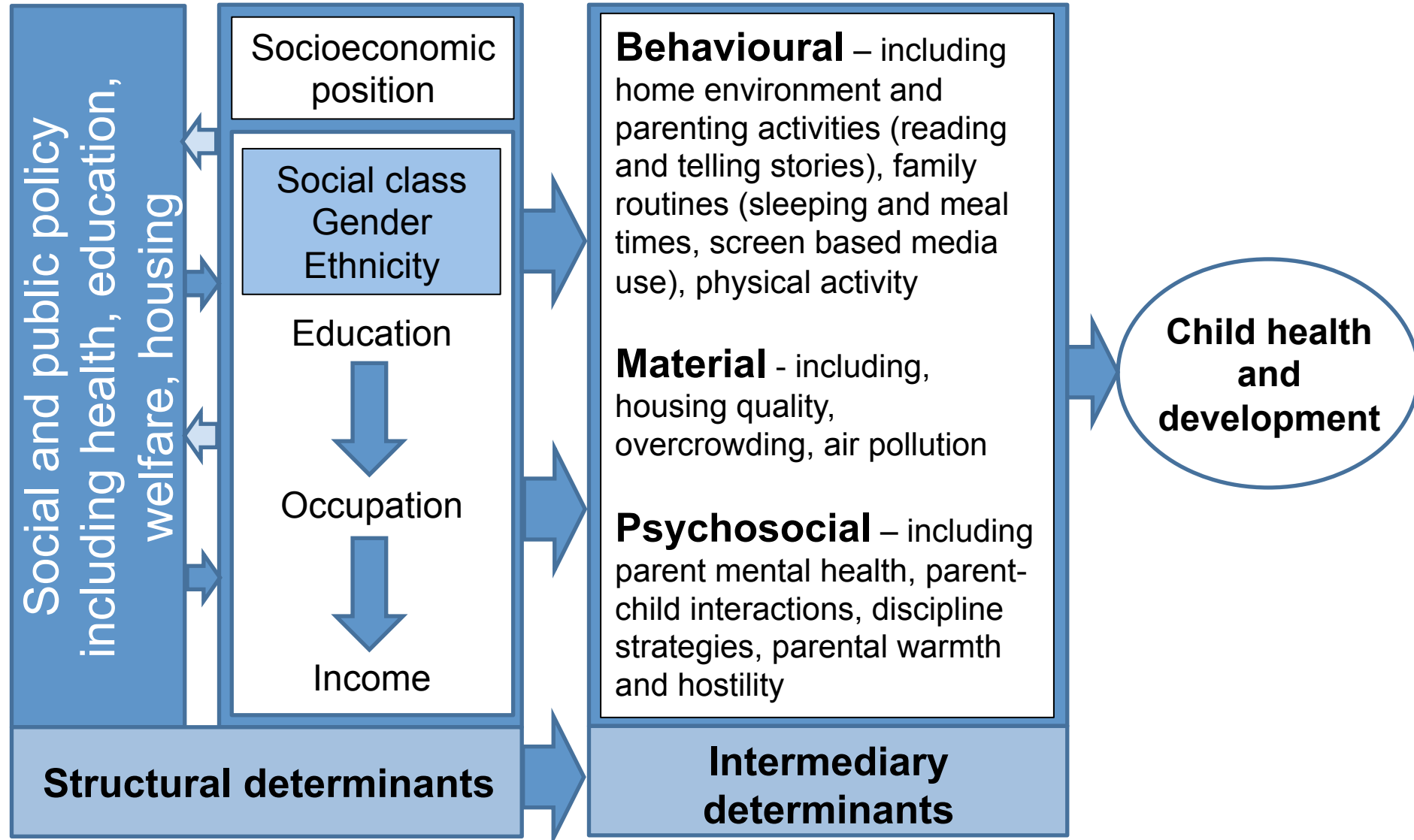
@childofourtime

# CSDH conceptual framework for action on the social determinants of health

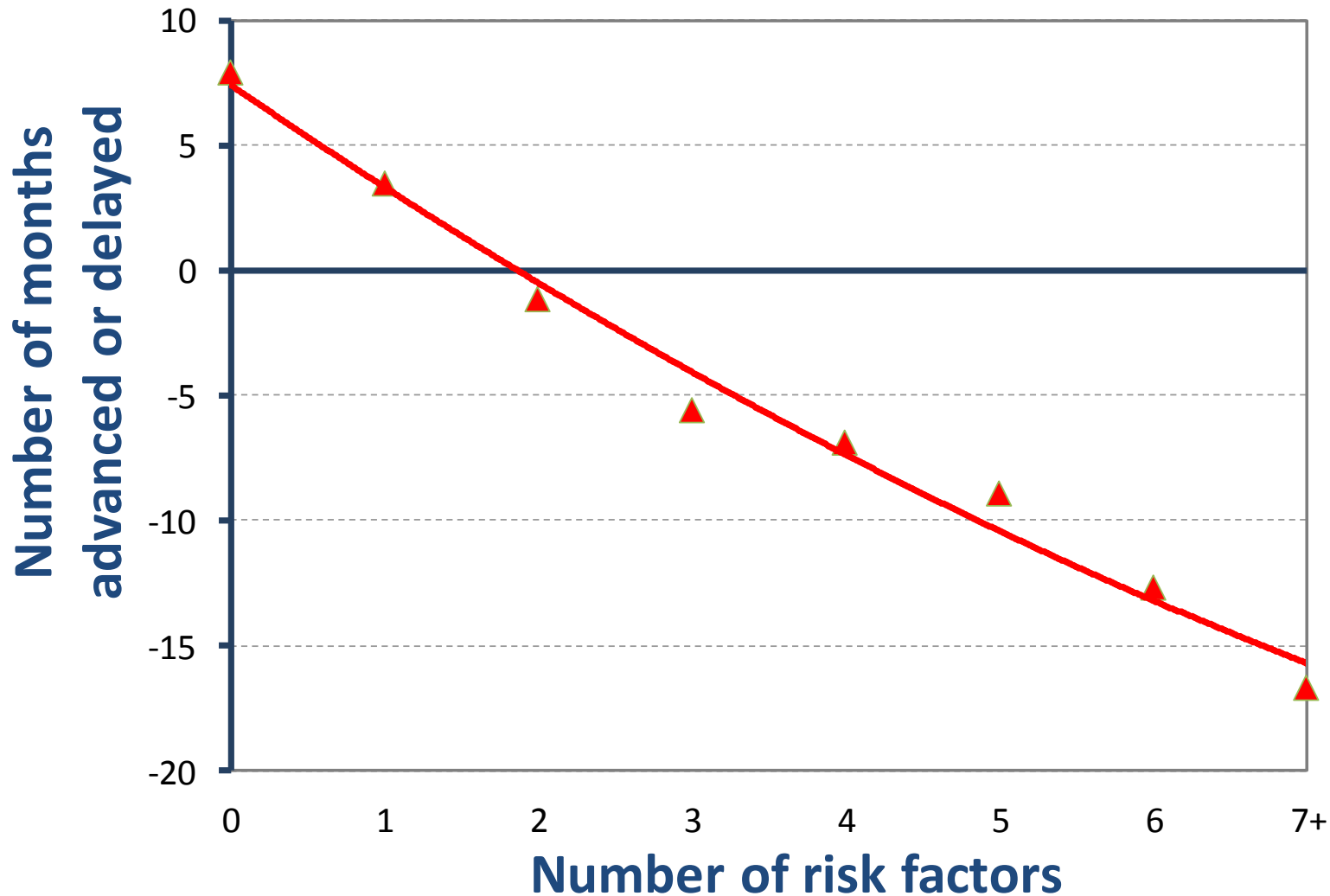


Solar O, Irwin A (2010): A Conceptual framework for action on the social determinants of health. Social Determinants of Health Discussion Paper 2 (Policy and Practice). Geneva: World Health Organization.

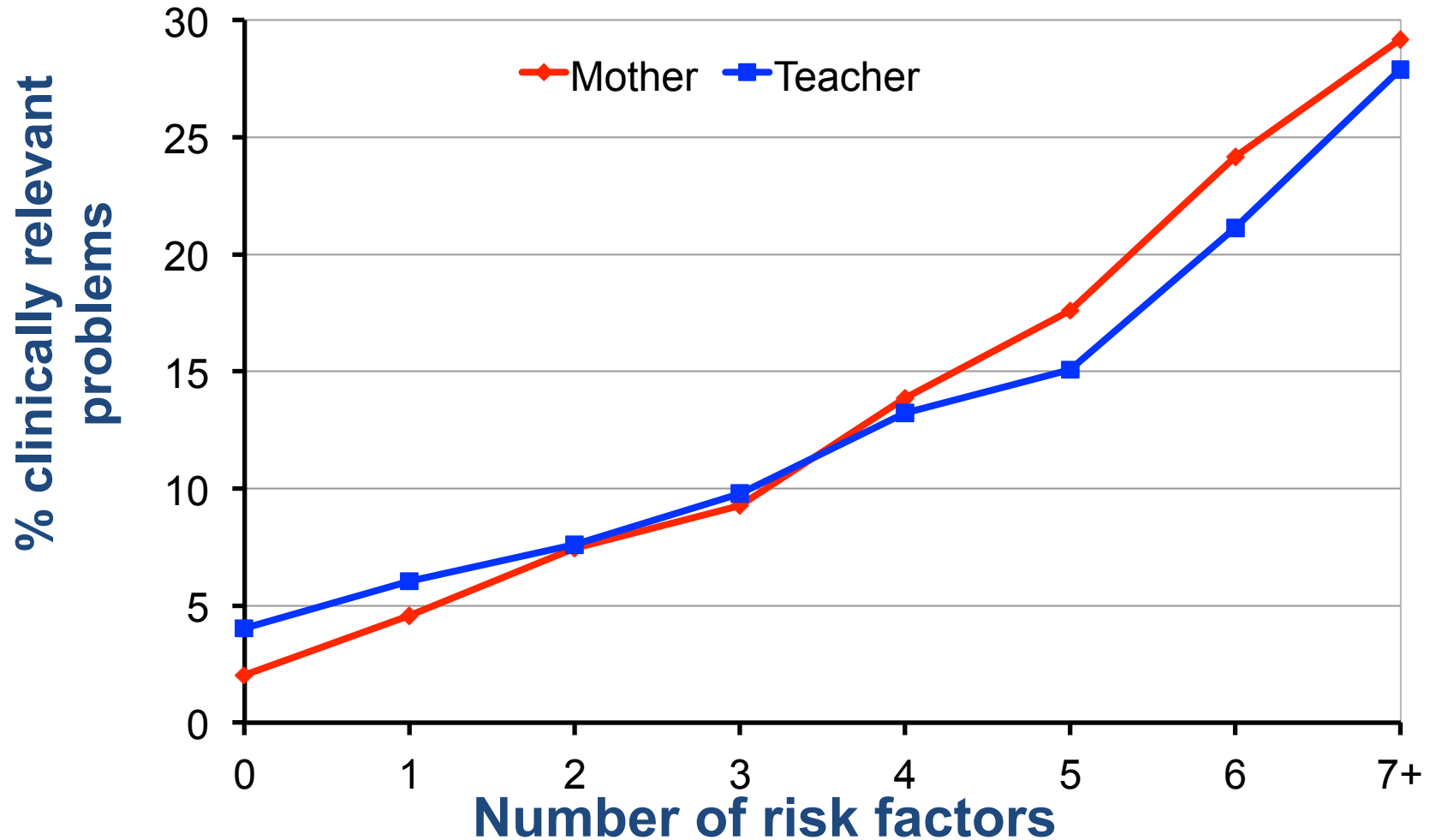
# Social determinants for child health and development



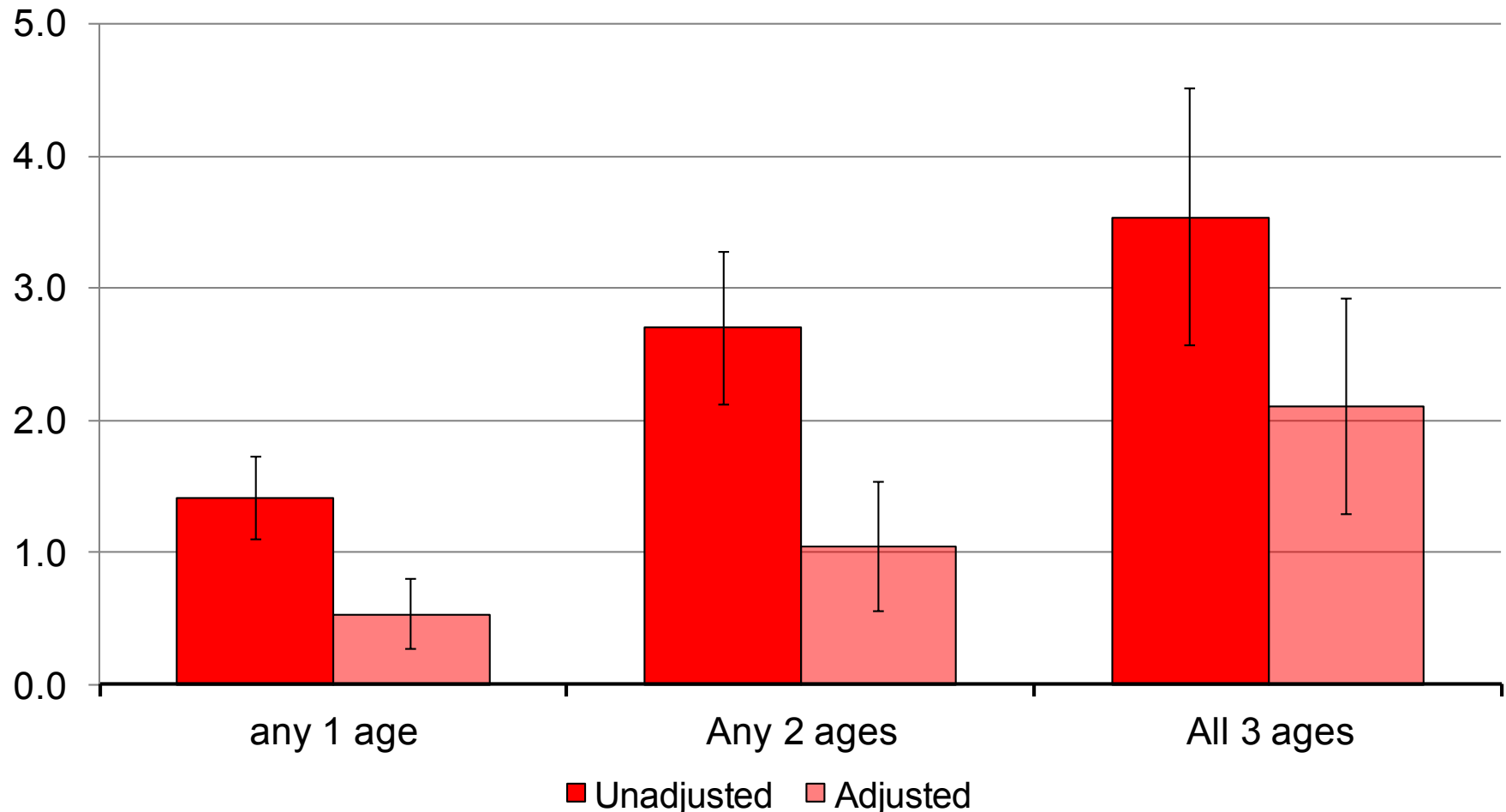
# Verbal months ahead or behind at age 7 by number of risk factors



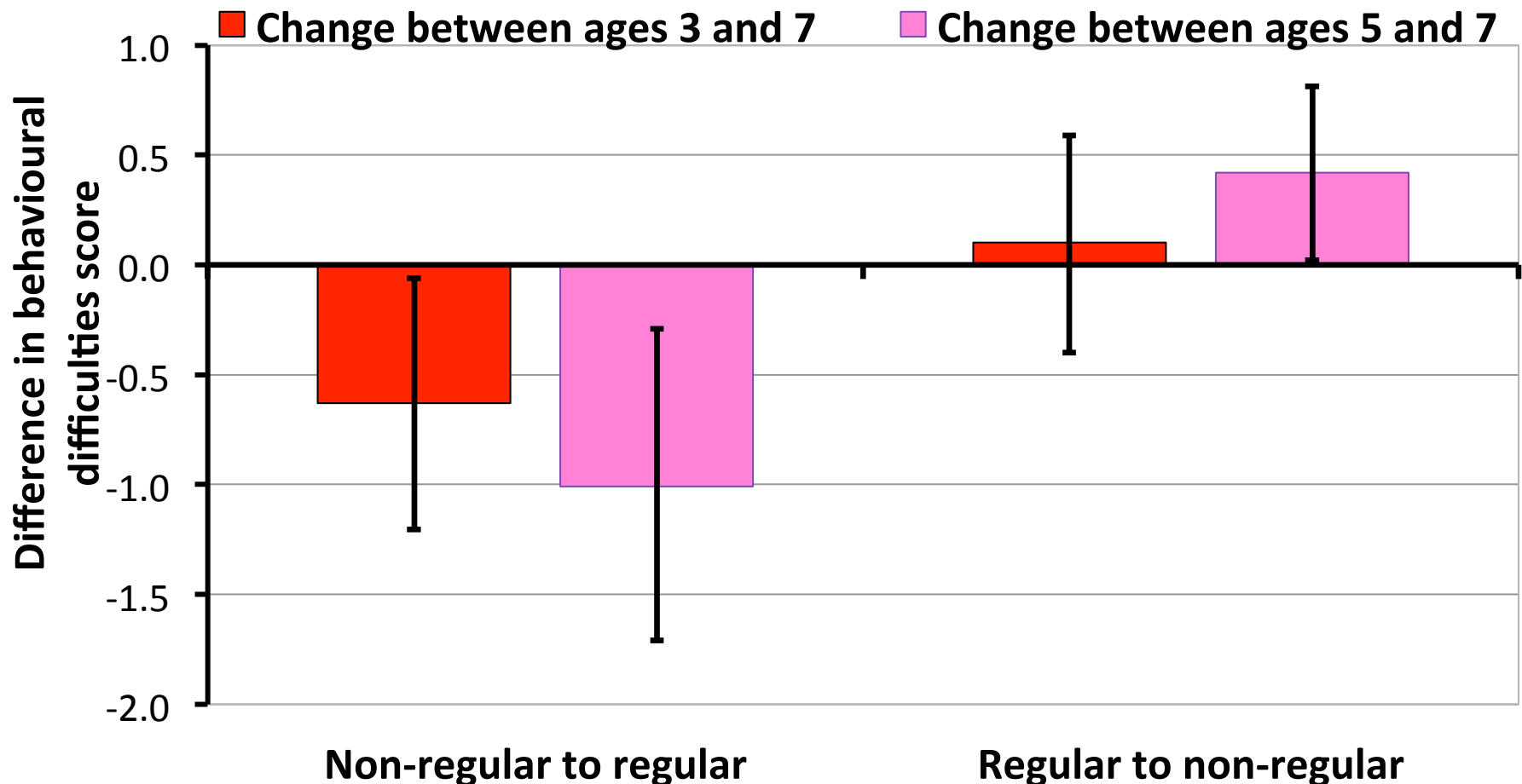
# Clinically relevant behavioural problems at age 7, by number of risk factors



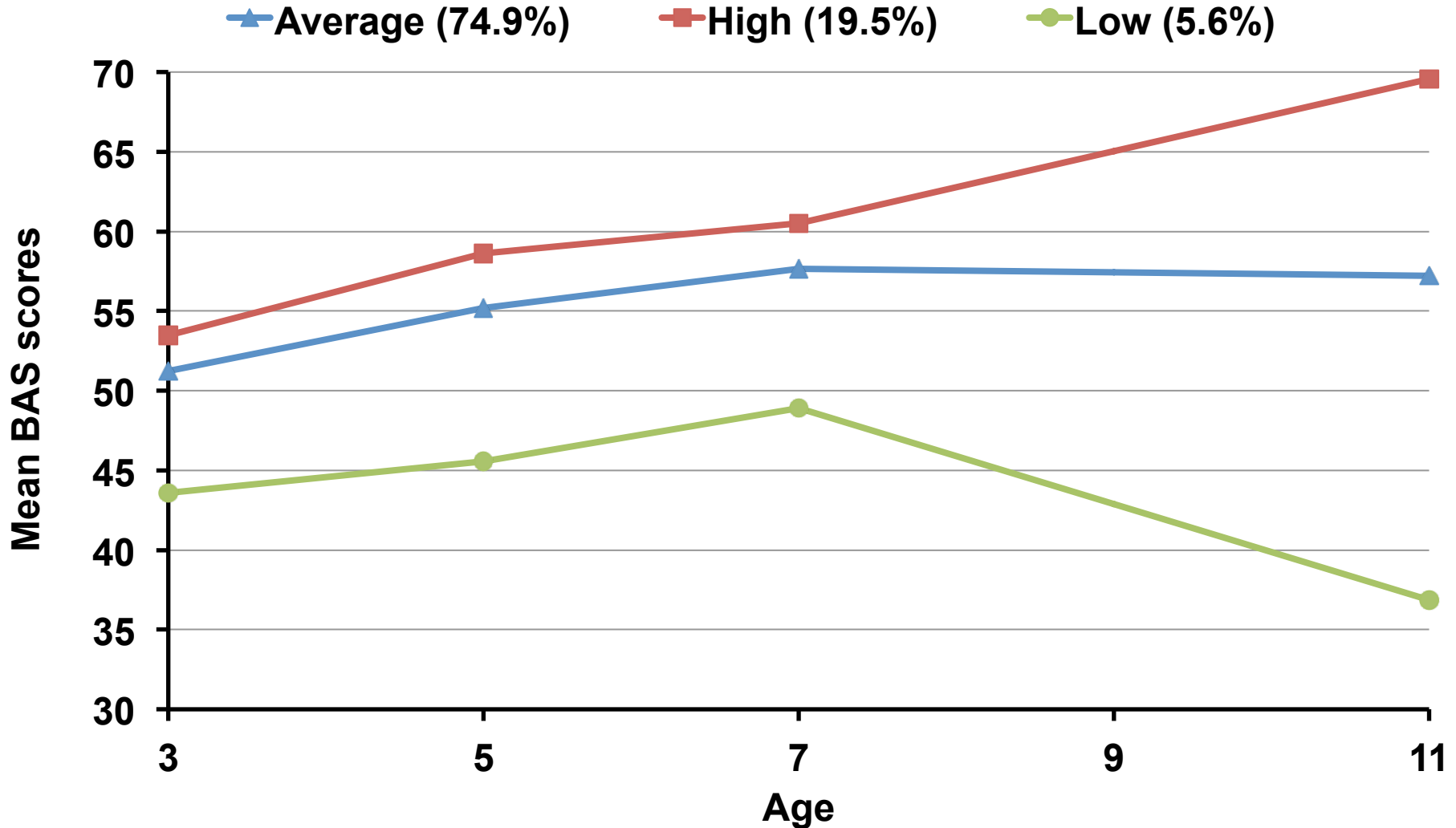
# Regression coefficients for behavioural difficulties scores (mother report) by non-regular bedtimes throughout early childhood, cumulative effects



# The effects of changes in the regularity of bedtimes on behavioural difficulties scores

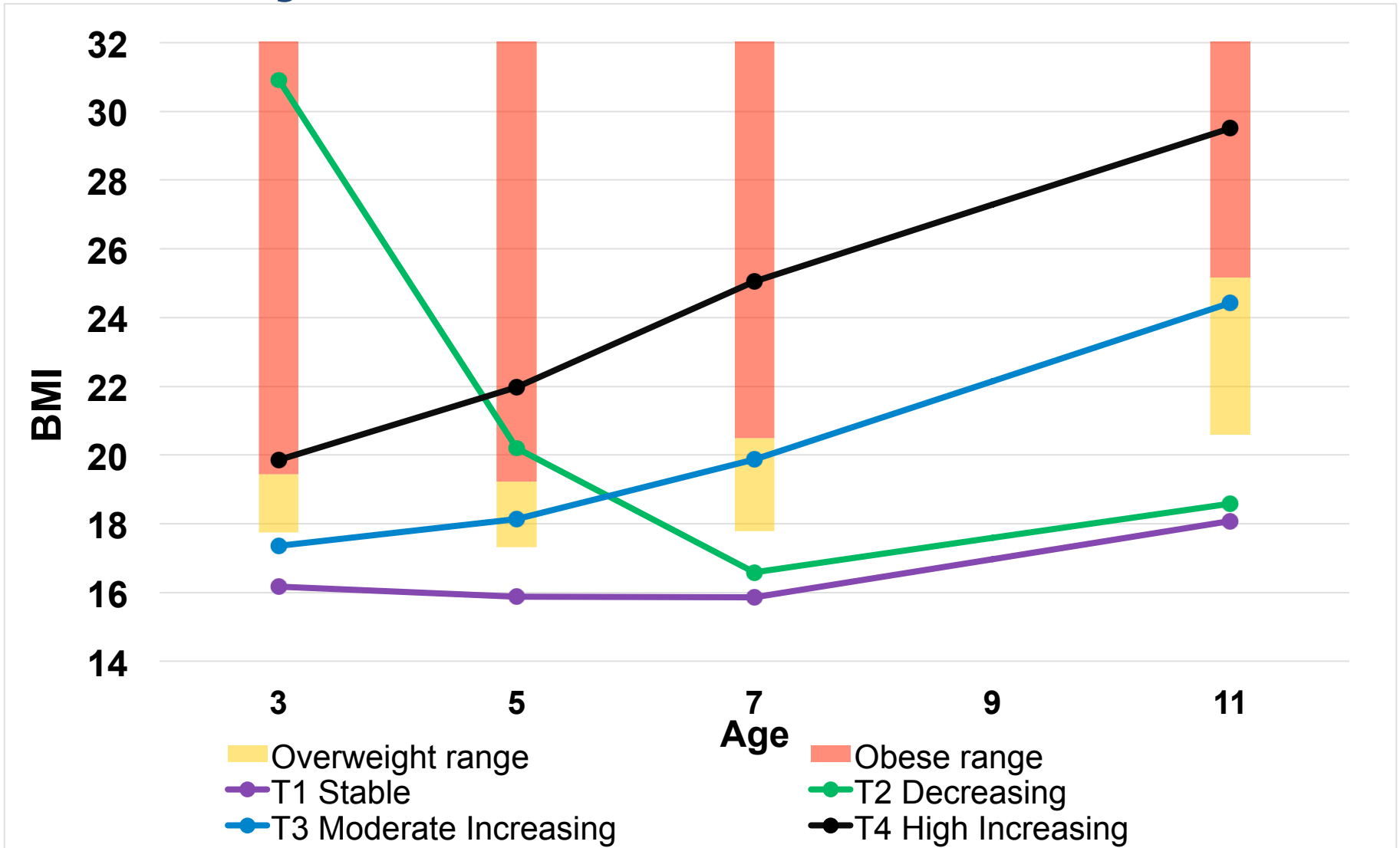


# Longitudinal Verbal Profiles



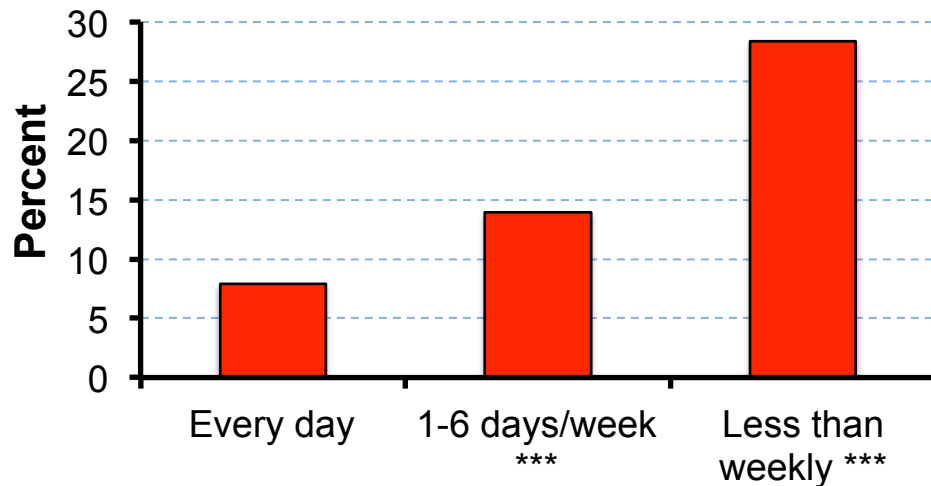


# BMI trajectories in childhood

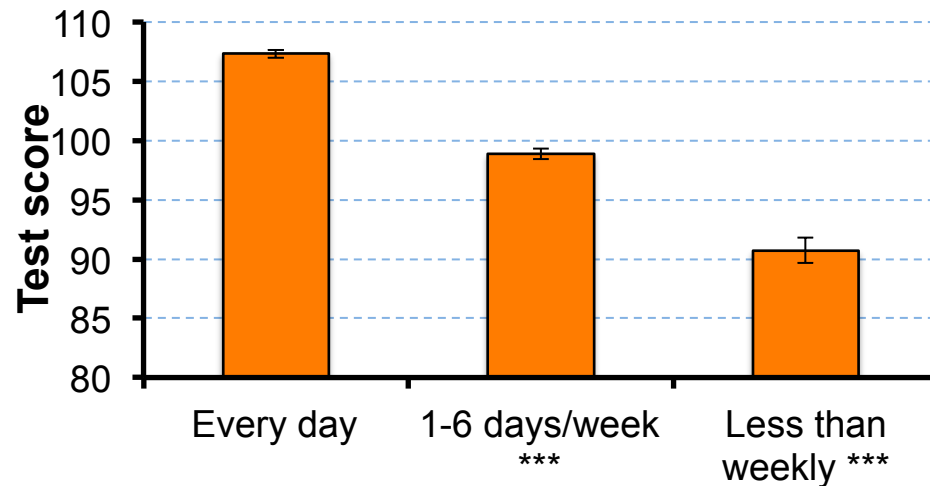


# Being read to at age 3

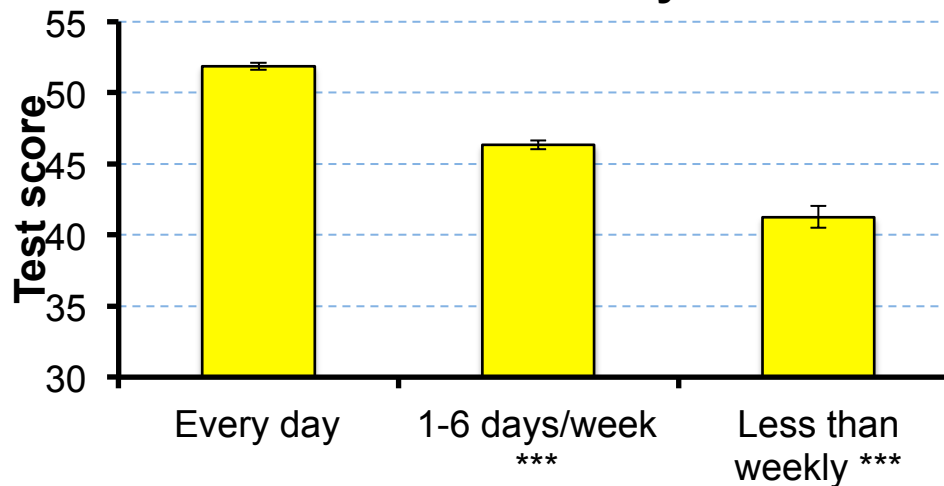
## Socioemotional difficulties



## School readiness

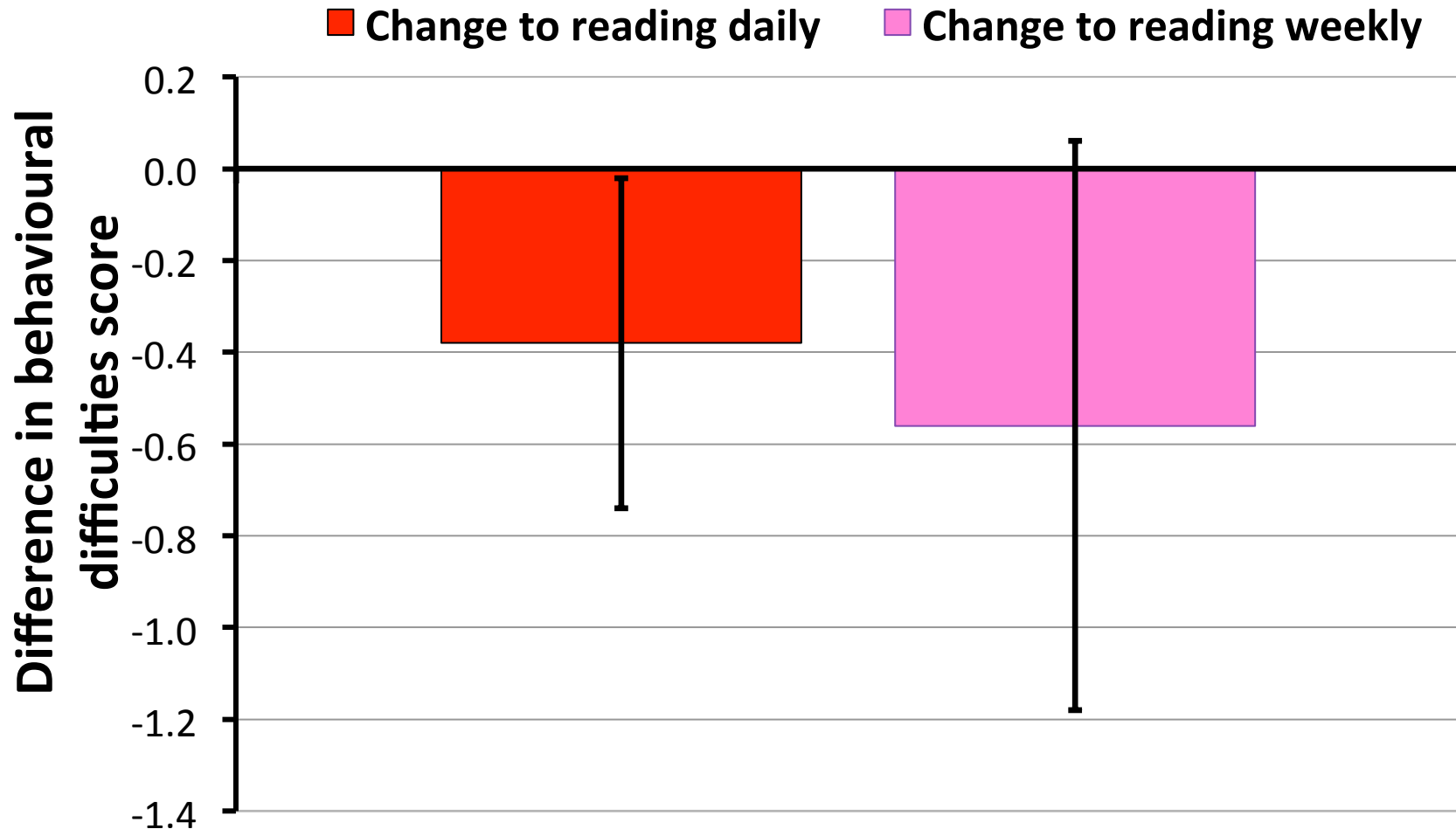


## Verbal ability

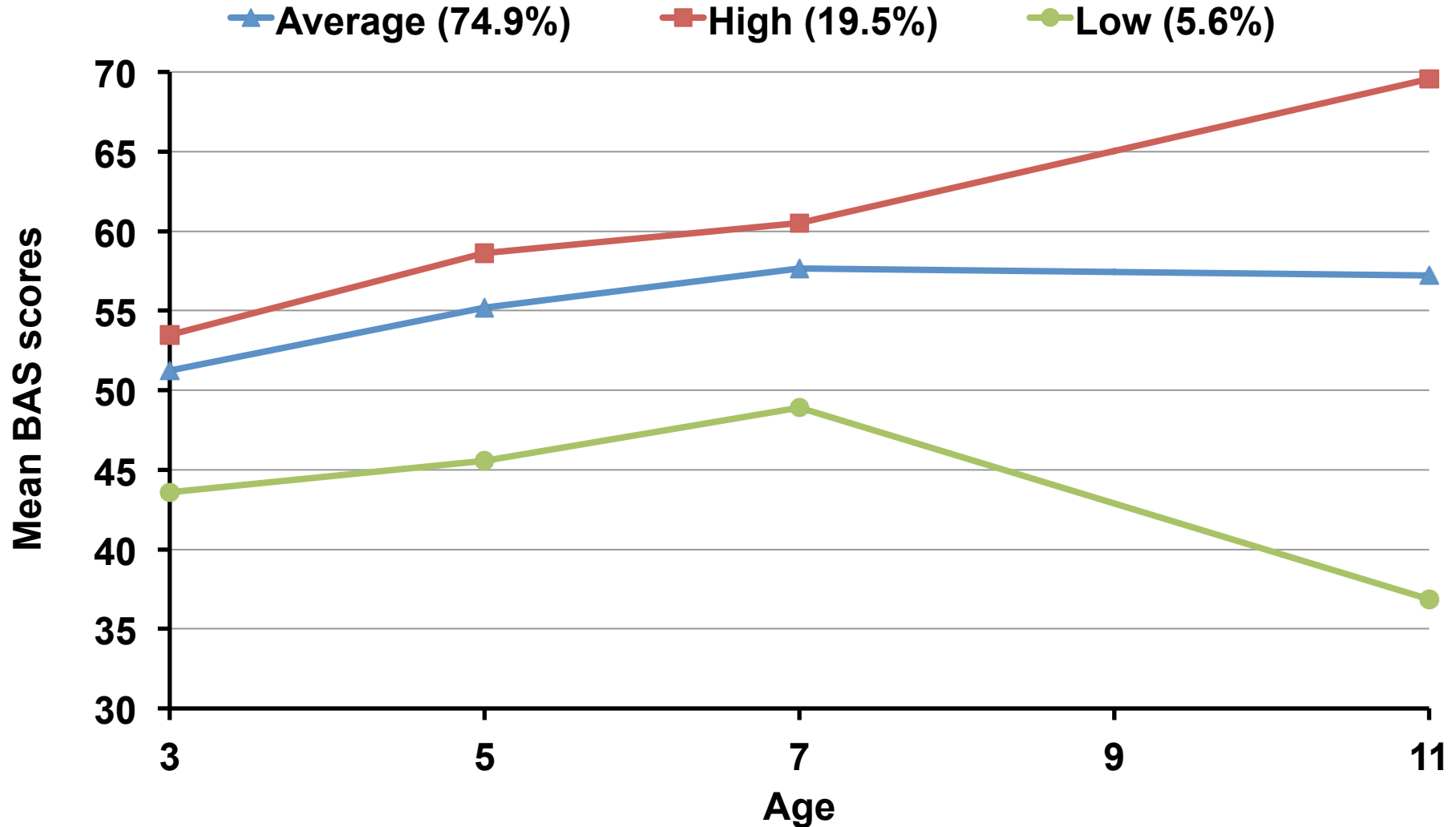


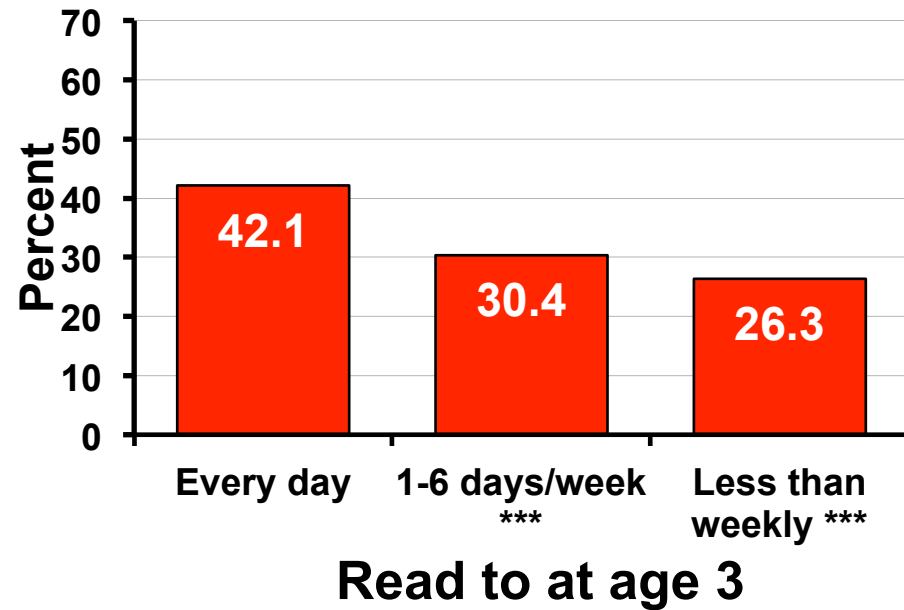
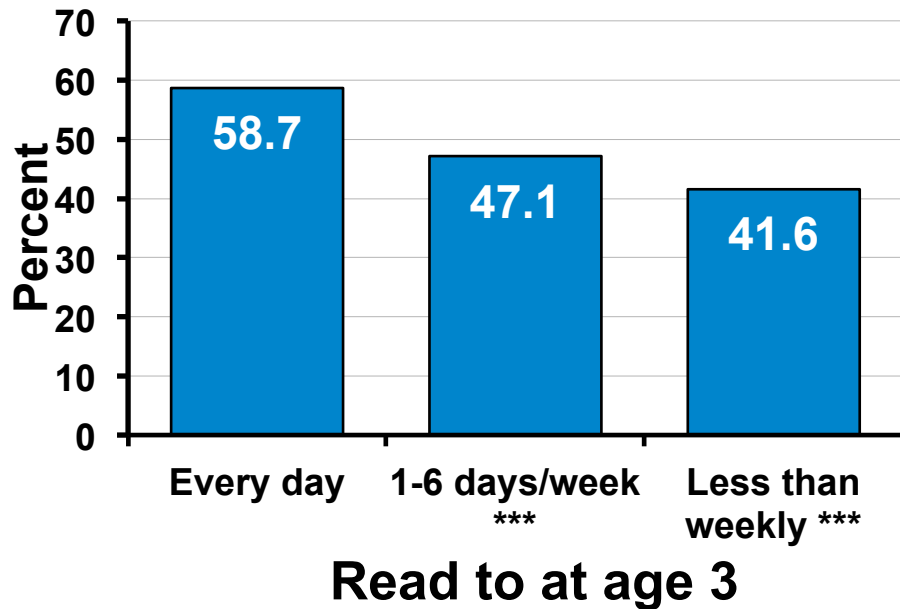
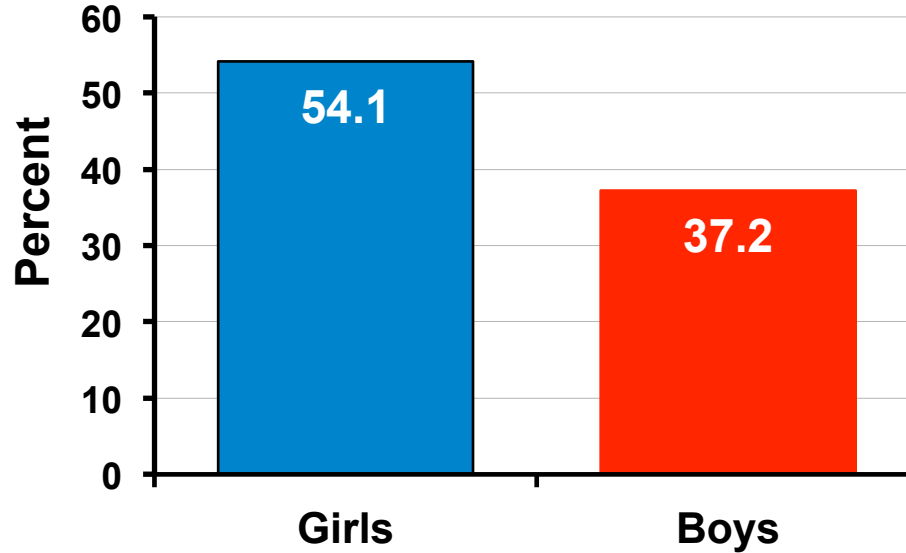
\*\*\* differences compared to those read stories to every day  $p < 0.001$

# Change in frequency of being read to, ages 3 to age 5

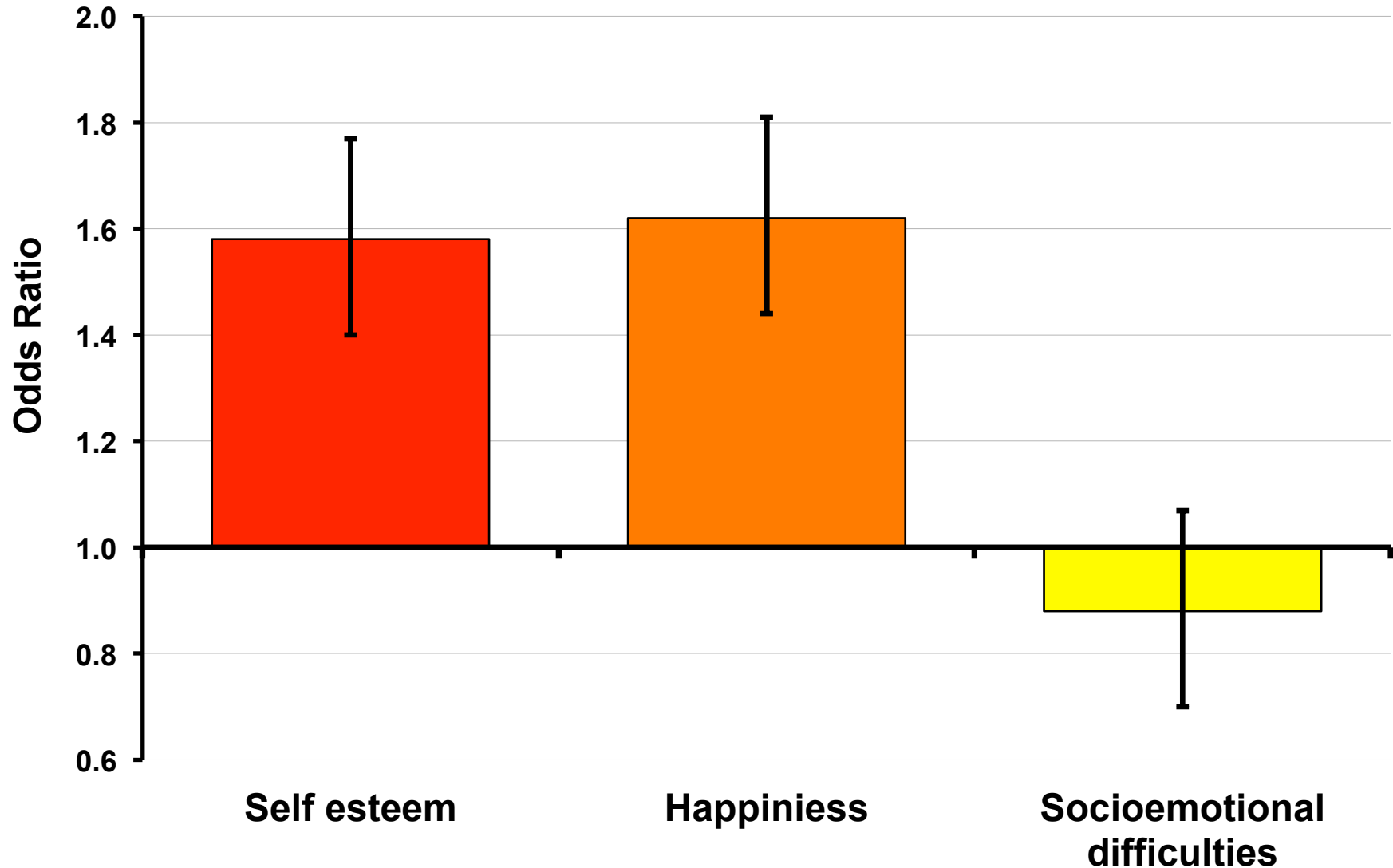


# Longitudinal Verbal Profiles

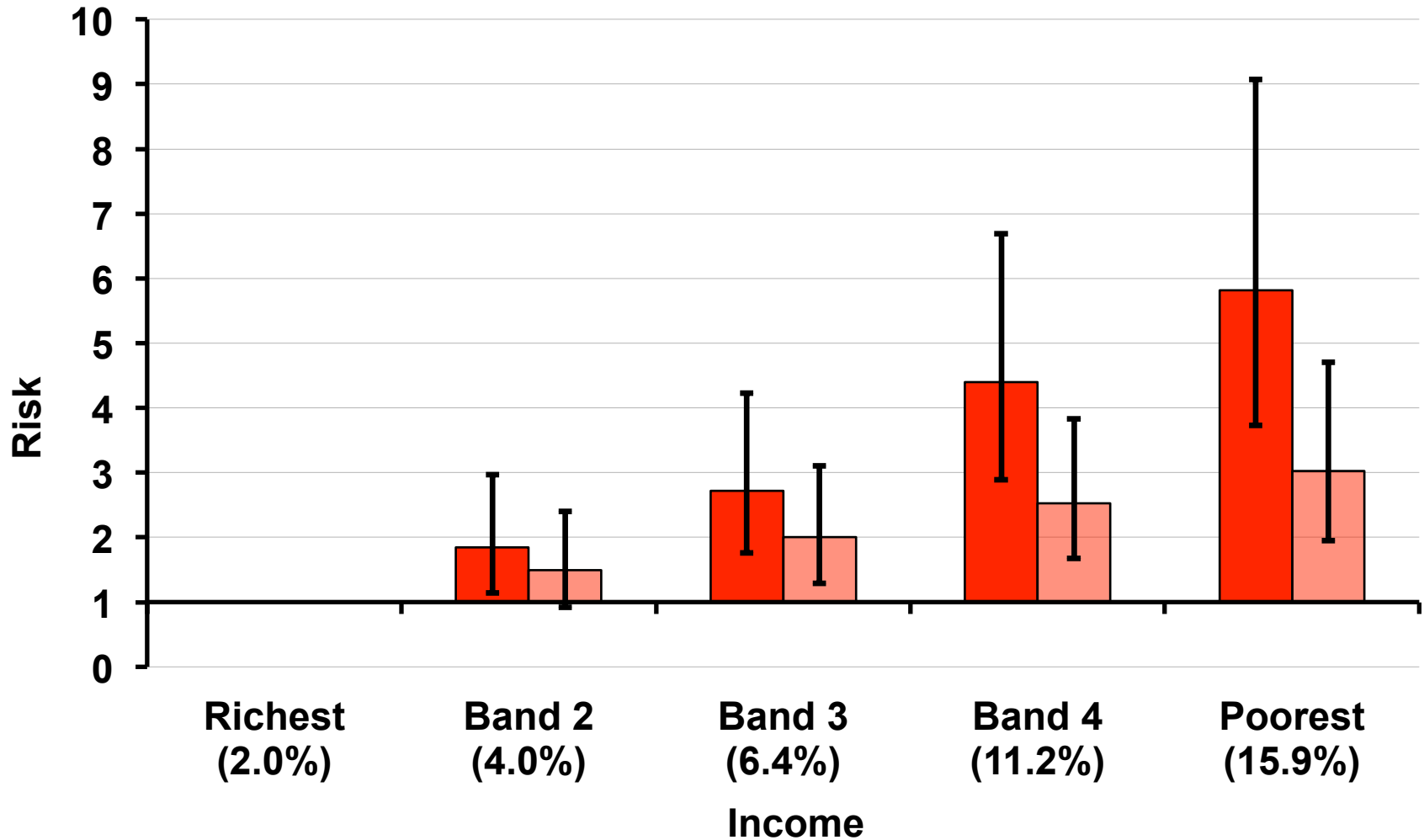




# Well being at age 11 by reading for pleasure



# Income gap in the risk of socioemotional difficulties at 5 years of age



## Summary

- Early child health and development matters – now and for the future
- Stark socioeconomic inequalities are evident and these start early
- Structural factors shape ‘intermediary’ environments: behavioural, material, psychosocial
- To give every child a good start in life - action is needed on intermediate and structural influences





**Bridging social and biological sciences**

**[www.ucl.ac.uk/icls](http://www.ucl.ac.uk/icls)**

**@icls\_info**

**@childofourtime**